

Modernizing the Warehouse:

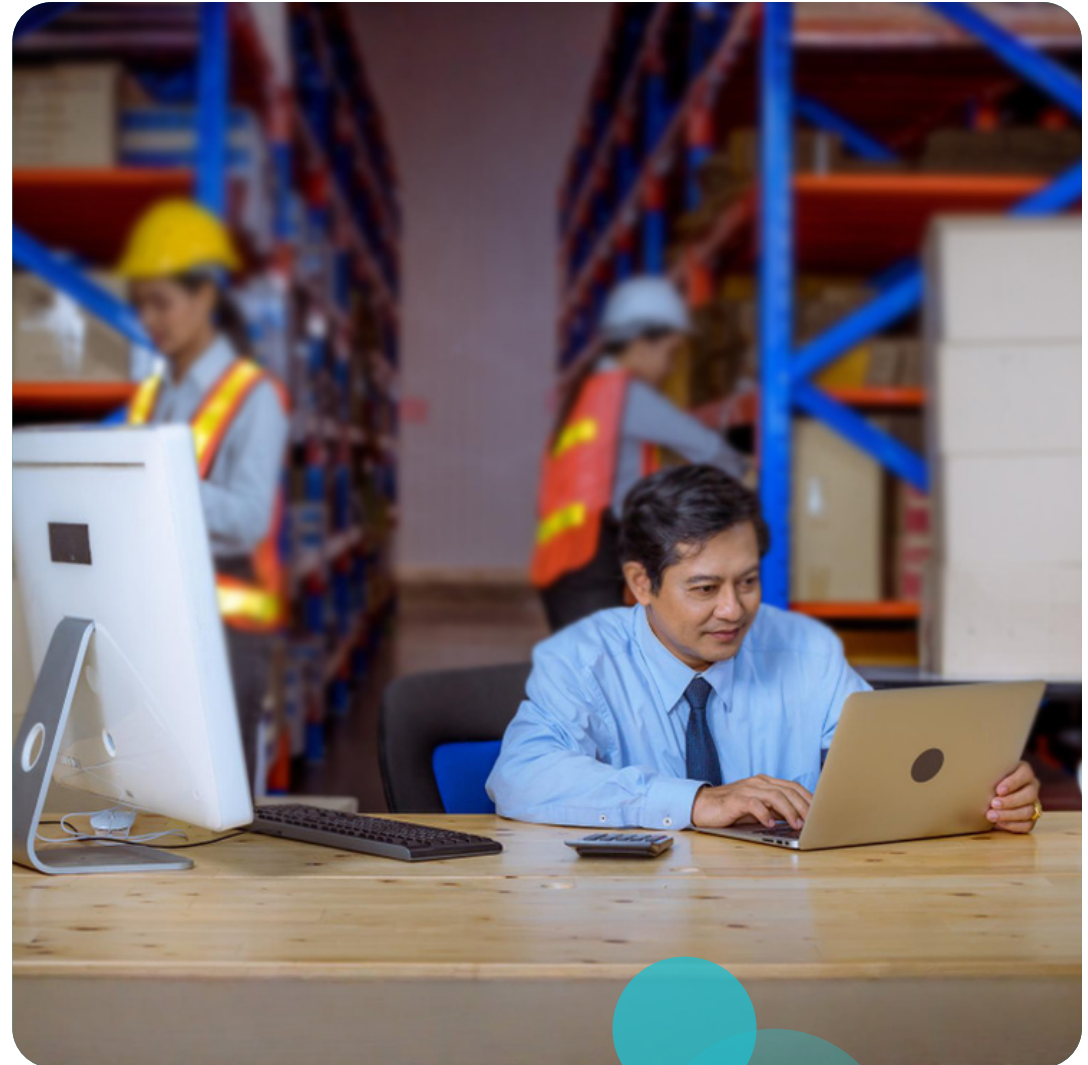
A C-Suite Guide to
SAP EWM



When Warehouse Decisions Become Board Decisions

Your warehouse is no longer just a cost center; it directly shapes revenue, margin and customer experience—how fast you fulfill demand, how efficiently you use labor, space and automation, and how reliably you keep promises. Omnichannel fulfilment, labor shortages, SKU explosion and rising quality and compliance demands expose the limits of legacy WM and spreadsheets. SAP Extended Warehouse Management (EWM) gives the real-time visibility, control, automation and analytics modern warehouses need.

The question isn't "Do we need better warehousing?" It's: **Can we afford not to modernize now?**





What SAP EWM Actually Does

In executive terms, SAP EWM is an advanced warehouse solution that manages end-to-end processes from goods receipt to goods issue, tracks inventory in real time at bin, batch and handling-unit level, orchestrates people, processes and machines, and integrates tightly with SAP S/4HANA and other supply chain modules. It supports everything from manual sites to highly automated DCs, so you can start small and scale. Key levers: real-time inventory and smart slotting, efficient fulfilment and shipping, embedded quality and returns, and task orchestration across people and automation.



Business Outcomes That Matter to Leaders

For business leaders, EWM translates into clear, measurable gains:



Higher throughput without new buildings

Optimized flows, smarter slotting, and better task management let you push more volume through the same footprint.



Better customer experience and OTIF

Real-time inventory and system-directed picking reduce errors and delays, improving service levels and protecting key accounts.



Lower cost per order

Less rework, fewer manual touchpoints, better labor utilization, and improved space usage drive down operating costs.



Scalability and resilience

A standardized EWM template can be replicated across sites and regions, making your network easier to scale and govern.



Compliance and risk control

Stronger quality, traceability, and reporting help manage regulatory, brand, and supply risk.

Where SAP EWM Really Pays Off

These are the scenarios where we see the strongest impact—and where a partner like Korcomptenz can move the needle fastest.

01

Distribution Centers “Out of Space”

You’re adding SKUs and channels, but the building is fixed.

EWM improves layout, slotting, and picking paths.

You gain capacity and speed before committing to a new facility.

When to talk to us:

You’re debating capex for more space, but suspect process and system changes could unlock capacity you already have.

02

Omnichannel and Multi-Customer Facilities

One warehouse serves stores, eCommerce, B2B, and maybe 3PL customers.

EWM handles multiple order types, priorities, and service levels in one platform.

You can protect SLAs for strategic customers while managing cost across the rest.

When to talk to us:

Your teams are constantly firefighting between channels and high-value customers.

03

Production-Linked Warehouses

Production lines stop “because material isn’t there” even though SAP says it is.

EWM synchronizes component staging and replenishment with production.

You get fewer stoppages and more predictable output.



When to talk to us:

Manufacturing is modernizing, but warehouse processes are still manual or fragmented.

04

High Returns or Regulated Products

Returns, quality holds, and audits are tying up cash and capacity.

EWM structures returns and quality flows, with full traceability.

You can confidently release stock, recover value, and demonstrate compliance.

When to talk to us:

Your returns and quality teams live in spreadsheets and email threads outside the system of record.



Why Engage Korcomptenz on Your EWM Journey

Implementing SAP EWM is not just a technical upgrade. Done well, it becomes a lever for competitive advantage. Done poorly, it's just a new system that preserves old problems.

Korcomptenz helps you land on the right side of that equation.



- **Business-first, not config-first**

We start from your KPIs—throughput, cost per order, OTIF, inventory turns—and design EWM around those outcomes, not the other way around.

- **Right-sized scope and roadmap**

Basic vs advanced EWM, embedded vs decentralized, one DC vs network rollout—we help you choose what you actually need now, with a clear path for later.

- **Proven patterns and accelerators**

We bring templates for processes, data, integrations, and dashboards so you move faster and avoid trial-and-error.

- **Change and adoption built-in**

Supervisors, planners, and operators have to work differently. We focus on training, governance, and simple, role-based views so the new way of working sticks.

- **Foundation for automation and AI**

As you're ready, we help you layer on robotics integration, advanced analytics, and AI-driven use cases—without redoing your core design.

Your Next Step

If you're questioning warehouse constraints, EWM ROI, or how to modernize safely, let's talk. Korcomptenz will baseline performance, define an EWM vision with clear KPIs, and shape a phased roadmap with early wins. You don't need every answer—just the next smart step.





Expert-led Transformations & Impact-led Growth

At Korcomptenz, we lead with expertise – in technology and domain to deliver solutions that align with your business goals. We leverage our experience and robust partner ecosystem to elevate your processes, powering your transformation journey toward impactful growth.

Visit www.korcomptenz.com to learn more or email us at sales@korcomptenz.com.