



## Why do you need an EDI partner?

Understanding the benefits of EDI and how an expert services provider can help

Whether you're a manufacturer, retailer, or a logistics company, expanding trade relationships is critical for your growth- a process that requires automated transmission of business documents in a standardized electronic format. In today's fast-paced business landscape, a fast and error-free interchange of documents, including purchase orders, invoices, and advanced shipping notices, is rapidly becoming a necessity, with many large retailers mandating the usage of EDI as a pre-condition for their partners to streamline order and invoice processing.

## Why do businesses need EDI?

### Speed:



EDI can cut down document transfer speed from days to seconds, contributing to significantly reduced business cycle times that provide a remarkable competitive advantage.

### Accuracy:



No manual documentation equals to no manual fat-finger errors resulting in reduced penalties and chargebacks from your trading partners.

### Cost optimization



Not only does eliminating manual processes substantially reduce overhead costs, but the decreased error rates also translate to huge cost savings in terms of preventing penalties and chargebacks. Moreover, the shortened order processing and delivery cycles lead to lowered inventory levels, which dramatically reduces carrying costs.

1

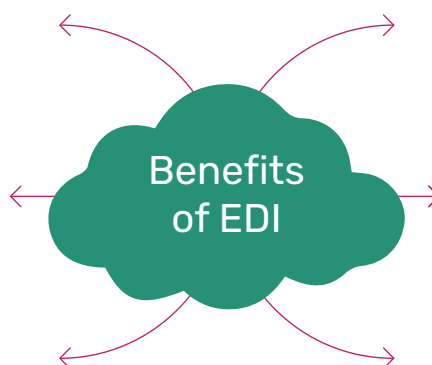
Enhanced Visibility

2

Increased ROI

3

Reduced Inventory Cost



Benefits  
of EDI

Improved Operational  
Efficiency

4

Decreased Errors

5

Increased Accuracy

6

## Benefits of EDI for different industries

### Manufacturing:

- Supply chain efficiencies
- Better collaboration and communication between manufacturers, suppliers, and distributors



### Automotive:

- Streamlined supply chain operations
- Reduction in errors and processing times due to elimination of manual efforts
- Compliance with regulations and industry standards



### Retail:

- Better inventory management and order processing
- Increased supplier and retailer collaboration
- Improved supply chain visibility



### Logistics and Transportation:

- Better supply chain management leading to delivery effectiveness
- Streamlined communication between carriers, shippers, and receivers
- Reduced transportation delays due to improved visibility



## Some Common Types of EDI Transactions

### Transportation Management:

EDI can be used to send and receive routing instructions (EDI 754), Transportation Carrier Shipment Status Message (EDI 214), Motor Carrier Freight Details and Invoice (EDI 210), and more.

### Purchase Order Management:

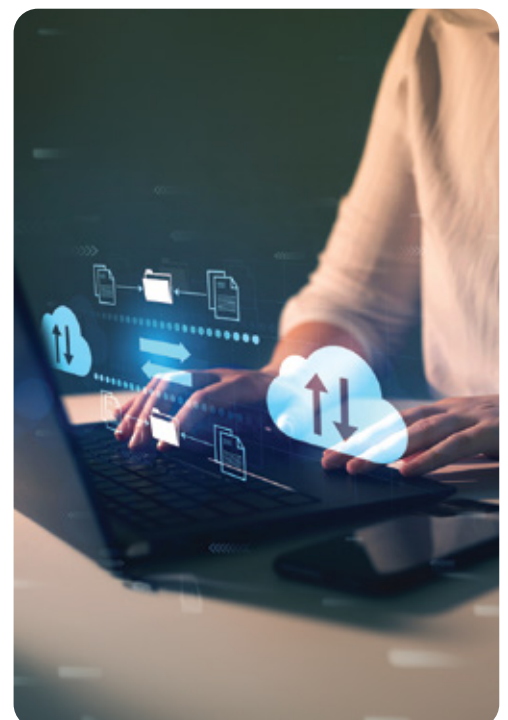
EDI helps in integrating purchase orders (EDI 850) and purchase order acknowledgements (EDI 855) with the order systems to manage orders efficiently.

### Invoice Management:

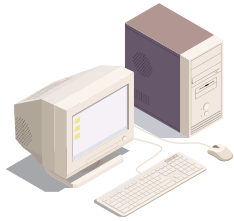
The invoicing process (EDI 810) can be made more well-ordered with EDI, resulting in more swift payments and precise tracking.

### Warehouse Management:

Warehouse management and fulfilment processes can be made more efficient with electronic advanced shipping notices (EDI 856), warehouse shipping advices (EDI 945), receiving advice (EDI 861), and more.



## Traditional vs. Modern EDI



Traditional EDI refers to the exchange of electronic documents and flat files in batches between trading partners that conform to the syntax and semantics defined by standards like ANSI ASC X12 and UN/EDIFACT.



Modern EDI extends the potentials beyond traditional EDI and offers B2B integration and automation capabilities to support the use case requirements of modern businesses through an easy-to-use platform, facilitating any-to-any connectivity, near real-time responses, 360-degree integration, and support of non-standard document syntaxes, and more.

## Why Partner with an Expert Solution Provider?

In today's rapidly evolving business landscape, EDI has become more elaborate and complex through globalization, with new data formats, extensive compliance requirements, demanding business initiatives, more cloud-based platforms and applications, and larger document sizes. More and more, EDI is encompassing the entire data flow process of businesses. An expert EDI partner can manage your EDI requirements and relieve you from the stress of in-house management. Your EDI solution provider can set up the system and onboard vendors and trading partners while providing ongoing support to resolve any technical problems. You can either opt for a managed services model by maintaining on-premise servers where your partner manages the business processing or you can outsource the infrastructure and applications to a solution provider in the cloud to completely outsource the process.

## Partnering with an EDI expert can help you:

- Better manage the service-level-agreements with your trading partners
- Reduce penalties and chargebacks
- Improve efficiency, visibility, and auditability
- Better address application and data integration needs
- Improve organizational productivity

## Why Korcomptenz

Korcomptenz has deep partnerships with the top EDI solution providers, including SPS Commerce, TrueCommerce, and Lanham to provide expert EDI services that accelerate business growth. With our industry-verified expertise and in-depth industry knowledge, we have helped several clients adopt EDI successfully. We can help you:

- Reduce EDI onboarding time down to days with pre-build EDI integrations
- Proactively error-proof EDI processes
- Automate EDI order processing, including order-to-cash, load tender-to-invoice, and procure-to-pay cycles.
- Provide comprehensive integration capabilities covering transactions like Purchase Order Acknowledgement, Advanced Shipping Notice, Invoice, Inventory Inquiry, and more

