



Education Industry Solutions Powered by Microsoft Dynamics 365 CE

This industry accelerator is helping the education industry shape the roadmap and is dedicated to enabling ISVs, partners, and customers to build and focus their efforts on vertical industries in a streamlined approach. The accelerator provides a uniform platform for customers who wish to connect, embed, or extend the Dynamics 365 platform and Microsoft Power Platform.

The education accelerator encompasses two components: higher education and K-12 education. The higher education component provides access to a business partner dashboard, a holistic student information form, an institutional dashboard, and more. The K-12 education component includes a parent-and-student portal, a standards-based model application template, a student behaviour management application, and more.

The education accelerator can be used to help improve resource allocation for student success. It allows users to holistically visualize information and in turn improve decision-making. It enhances engagement for all stakeholders including parents, teachers, and students. **The accelerator helps to springboard your digital transformation with better use of your data in three ways:**

● Connecting disparate systems to a single view of student data

● Creating more personal and more effective engagement

● Teaching and learning in a hybrid environment

A) Higher Education

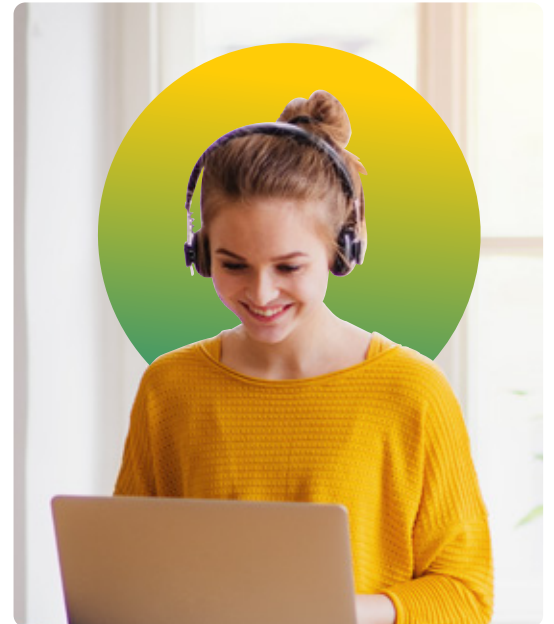
With the higher education component in the Microsoft Dynamics 365 education accelerator, you can develop solutions that are based on entities and attributes that higher education institutions use. The component includes entities for student engagement, and additional entities for internships, scholarships, grants, and accomplishments. The component also provides entities, fields, forms, views, and dashboards specific to higher education.

The higher education scenario is released to complement an existing Dynamics 365 instance and assist with day-to-day operations, or as a standalone data model for developers. The accelerator contains installable scenarios that include standard entity attribute extensions, new higher education entities, prebuilt dashboards, sample data, and other tools to help customers and partners build and deploy new solutions.

Data Model Extensions:

This accelerator contains extensions to Common Data Model to include concepts for higher education, including entity definitions and relationships.

- ▶ The higher education data model is also available as a stand-alone model that ISV and SI partners can use.
- ▶ A portal where students can view progress toward completion of program requirements, connect with an advisor, view courses and events, and see the history of courses and applications.
- ▶ An advisor dashboard that provides top and bottom performing students as an example, and an at-a-glance view of students in need of support.
- ▶ A business partner dashboard that provides information to partner organizations to help them engage with the university for events, hackathons, internships, scholarships, and grants.
- ▶ The Accomplishment extension that captures any work completed by students outside of a course, such as hackathons or awards.
- ▶ The Grants phone app that allows research faculty to keep track of applications and approval of grants to which they've applied.
- ▶ Access by all personas, including students, business partners, and faculty members, to rich reporting on students applying for internships, grants, and scholarships.
- ▶ System views that provide easy access to relevant areas. The system views include the following entities: students, faculty, extracurricular activities, previous education, test scores, courses, academic periods, programs, test types, registration status, and areas of interest.
- ▶ Sample apps to show some of the possibilities of Unified Interface.
- ▶ Example Dynamics 365 dashboards and Microsoft Power BI dashboards that provide analytics for completed courses and allow drilling into details about student performance, instructor effectiveness, and course feedback.
- ▶ Support for building more canvas apps and model-driven apps in Microsoft Power Apps.
- ▶ A solution that you can deploy and install from AppSource or GitHub.



B) K-12 Education, Data Model & scenarios to Improve Student Engagement

The K-12 component sits on top of an existing Dynamics 365 instance or Microsoft Power Apps instance to assist with day-to-day operations, or as a standalone data model for developers to build custom applications. The student profile, educator, and community engagement scenario contains the data model and installable scenarios. The K-12 data model is also available as a stand-alone model that ISV and SI partners can utilize.

Scenario	Target audience	Description
K-12 parent and student portal	Parents and students	View student information related to: school registrations, activities, attendance, achievements, coursework, learning standards, incidents and interventions. Parents and students can access this information from a responsive website built on Microsoft Power Apps portals.
Collect school paperwork and forms	Faculty and staff	Use Microsoft Power Platform to extend applications that automate the collection of paper work and forms related to application processes. Digitally transform your application and application process
School management	Faculty and staff	Interact with custom schema that aligns to industry standards for managing school operations. Use the model-driven application to manage school calendars, bell schedules, learning accommodations, and teacher certification and licenses.
Ability to engage donors and raise funds	Staff	Interact with custom schema that aligns to industry standards for managing donors and donation. Use the Model-driven application to gain a better understanding of donors. Customers can use the industry-leading marketing and customer relationship management (CRM) features of Microsoft Power and Dynamics 365 to bring in donations and increase donor communication
Student behavior Management application	Faculty and staff	Administrators can easily record, track and encourage positive behavior from students through a Power Apps application built on canvas apps.
Track and Report Attendance application and dashboard	Faculty and staff	Educators can easily track and report attendance in the attendance application. For ease of access, this application can also be modified for use on a tablet or phone.

FORMS	DASHBOARDS	
Student form	Institutional dashboard	Grants phone
Student internship application status form	Business partner dashboard	Service Advisor – Redesigned canvas app
	Advisor dashboard	
	Student portal	



Korcomptenz

Discover how we #FocusOnYou at www.korcomptenz.com

DISCLAIMER:

The content provided in this document is intended solely for general information purposes. The content was compiled with reasonable care and attention at the time of its release. However, it is possible that some information in this document is incomplete, incorrect, out-dated, or inapplicable to particular circumstances or conditions. Korcomptenz does not accept liability for direct or indirect losses resulting from using, relying or acting upon information in the document.

This document may contain logos, trademarks, service marks or other insignia owned by third party organizations. The use of any such items does not constitute an endorsement, sponsorship, or any formal association with the respective owner. The respective owner retains all rights and title to their intellectual property.

Get in touch with us:

+1 (973) 601 8770 | sales@korcomptenz.com

